



CBT4 CBT6

CBT4

MAIN VEHICLE SPECIFICATIONS

Manufacturer			TOYOTA	TOYOTA
Model			CBT4	CBT6
Power Type			Battery	Battery
Operator Position			Rider Seated	Rider Seated
Tire Type		Front/Rear	Pneumatic	Pneumatic
Wheels (x = driven)		Front/Rear	2/2x	2/2x
Maximum Drawbar Pull		3-Minute Ratings	N <kg>	3920 <400>
Rated Drawbar Pull (Towing Capacity)		60-Minute Ratings	N <kg>	4410 <450>
Towed Weight		60-Minute Ratings	kg	6000
Travel Speeds		No Load	km/h	13.5
		w/ Load	km/h	9 w/2 ton
Gradeability *		No Load	% (tanθ)	36
Overall Length		3-Minute Ratings		32
		w/ Hitch	mm	2020
		w/o Hitch	mm	1880
Front Overhang			mm	160
Rear Overhang			mm	360
Overall Width			mm	965
Overall Height			mm	1250
Turning Radius (Outside)			mm	1775
Hitch Length			mm	140
Height of Hitch			mm	305
Wheelbase			mm	1360
Tread		Front	mm	260
		Rear	mm	790
Underclearance		Center of Wheelbase	mm	80
Floor Height			mm	330
Total Weight		w/ Battery	kg	980
		Without Battery	kg	540
Weight Distribution (With STD Battery)		Front	kg	330
		Rear	kg	650
Tires		Number	Front/Rear	2/2
		Size	Front	3.50-5-6PR (I)
			Rear	4.00-8-6PR (I)
Brake		Service (Foot)		Hydraulic
		Parking (Hand)		Mechanical
Battery		Voltage/Capacity (5-Hour Ratings)	STD	V/AH
		Weight (STD Capacity Type)	kg	440
Electric Motor		Drive	kW	2.6
Control Type		Drive		Transistor chopper

NOTE: * Computed values.

TOWED WEIGHT

Unit: Ton

Model		Start on Grade			
		3-Minute Rating		60-Minute Rating	
		CBT4	CBT6	CBT4	CBT6
Surface Condition (Dry Even Concrete)					
Level Road		4.0 <7>	6.0 <7>	4.0 <7>	6.0 <7>
Grade (Degrees)	1°	3.4 <4>	3.8 <4>	1.9 <7>	3.0 <7>
	2°	2.7 <4>	3.0 <4>	1.0 <7>	1.8 <7>
	3°	2.2 <4>	2.4 <4>	0.5 <7>	1.1 <7>
	4°	1.7 <4>	2.0 <4>	0.2 <7>	0.6 <7>

NOTE: < > indicates travel speed in km/h.

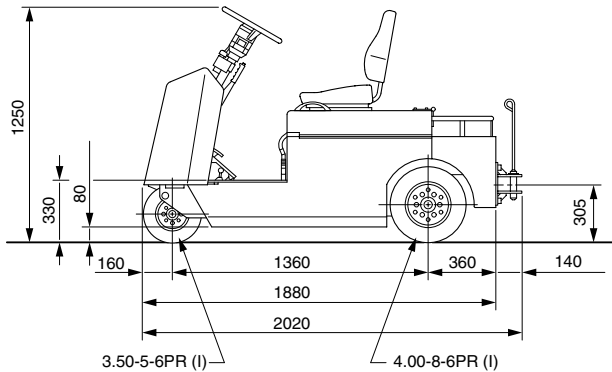
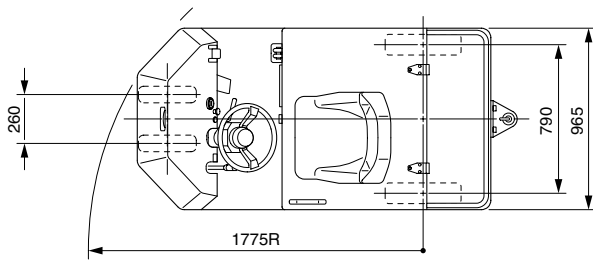
DIMENSIONAL DRAWINGS

CBT4.6

Unit: mm

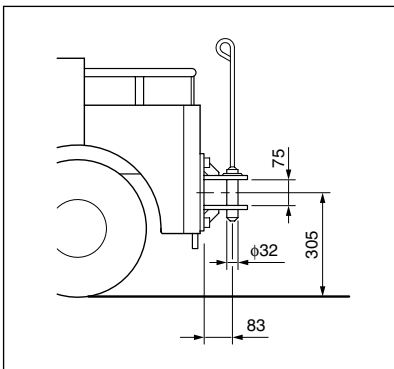
CBT4.6

INDEX: ○ Standard
● Available

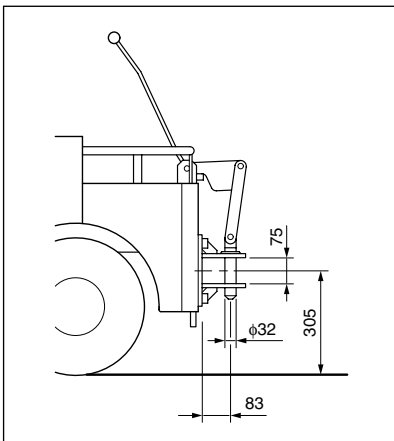


DRAWBAR

Pin Type Single Stage Drawbar
(Standard)



Lever Type Single Stage Drawbar
(Optional)



STANDARD EQUIPMENT

CBT4.6

● Operator Presence Sensing System (OPS) ● Headlights ● Battery capacity indicator
● Hour meter ● Electric horn ● Buck-up buzzer wiring ● Non-slip sheet ● Seat ● Seat switch ● Rear drawbar ● Battery hood damper ● Dual-action Parking brake ● Pneumatic tire ● Truck bed

OPTIONS AVAILABILITY CHART

Model		CBT 4	CBT 6
Item			
BATTERY AND CONTROLLER			
Battery	Battery (Wet Cell)	☆	●
	Roll-out Type Battery	☆☆	●
	Spare Battery (Dry Cell) 210AH	☆	●
Battery Case	Standard Type	●	●
	Roll-out Type	●	●
Battery Roll-out		☆☆	●
Battery Carrier	1)	★	●
Spare Battery Carrier	1)	★	●
Battery Charger (Off Truck Type)		☆	●
Modification for Fast-charging System		●	●
Keyless Ignition Switch		●	●
LIGHT AND INDICATORS			
Rear Combination Lights		●	●
Forward & Back-up Chime	★	●	●
Back-up Buzzer	★	●	●
Turn Signal Lights		●	●
4-way Hazard Lights		●	●
Strobe Light Wiring	★	●	●
Yellow Beacon	★	●	●
BODY			
Rear-view Mirrors Oval Type (Right and Left Sides)		●	●
Rear Drawbar (Lever Type)		●	●
w/o Rear Drawbar		●	●
Tilt Steering Column		●	●
Seat Switch w. Work On Hour Meter		●	●
Pencil Holder		●	●
Document Box		●	●
A4-Size Binder		●	●
Front Bumper		●	●
Name Plate	2)	●	●
Unit Indication (mm/kg)		●	●
OPS Decal		●	●
WHEEL AND TIRE			
Pneumatic-Shaped Cushion Tire	☆☆	●	●
OTHER			
Tool Set A		●	●

NOTE:

1) Must specify "Battery Roll-out".

2) Available for English, Spanish, Chinese, German, French, Russian, Taiwanese, Dutch, Danish, Portuguese, Italian, Greek, Swedish, Norwegian, Finnish, Hungarian, Czech, Polish, and Turkish.

★ Please see the "Matching Options".

☆☆ Please see the chart below for the item.

TIRE AVAILABILITY

Model	Tire Arrangement	Pneumatic-Shaped Cushion Tire			
		Tire Size	Rim Size (Type)	Rib Pattern	Rib Pattern (White)
CBT4.6	Front	3.50-5	3.00SP DT (Divided)	●	●
	Rear	4.00-8	3.00D DT (Divided)	●	●

AVAILABILITY OF BATTERY CHARGER

Full Automatic Charger

Battery Voltage	Battery Capacity	AC Input Voltage	Manufacturer	CBT4	CBT6
V	AH/5HR	V			
48	210-250	200	GS YUASA	●	
	280-305	200		●	●
	370	200			●

BATTERY AVAILABILITY

Model	Battery		
	V	AH/HR	
CBT4	48	210/5 (216/5)	●
		280/5 (250/5)	●
		(305/5)	●
CBT6	48	280/5 (216/5)	●
		(250/5)	●
		370/5 (305/5)	●

NOTE: () for Roll-out Type Battery.

MATCHING OPTIONS

(Column figures refer to matching with to the items listed at left)

Item	1)	2)	3)	4)	5)	6)	7)	8)	9)	10)	11)	12)	13)
Battery Roll-out	1)												
Spare Battery Carrier	2)	1											
Battery Carrier	3)	1											
Front Rib Pneumatic-Shaped Cushion Tire	4)												
Rear Rib Pneumatic-Shaped Cushion Tire	5)												
Front White Rib Pneumatic-Shaped Cushion Tire	6)			×									
Rear White Rib Pneumatic-Shaped Cushion Tire	7)				×								
Spare Tire, Front	8)			×		×							
Spare Tire, Rear	9)				×		×						
Yellow Beacon	10)												
Strobe Light Wiring	11)										×		
Forward & Back-up Chime	12)												
Back-up Buzzer	13)												×

INDEX: × Not available.
1 Must specify "Battery Roll-out".

NOTE: For other matching please consult us.

SPECIFICATIONS OF BATTERY

STD Type

Battery Voltage V	Battery Capacity AH/5HR	Manufacturer	Battery Cell			Container Height mm	Weight (w/case) kg	Model			
			Type	Length mm	Width mm			CBT4	Operating Time	CBT6	Operating Time
48	210	GS YUASA	VCF3C	90	158	575	395	●	11h55m		
		KOBE	VCF210A	90	158	575	440	●			
	280	GS YUASA	VCF4N	90	158	575	445	●	16h00m	●	6h57m
		KOBE	VCF280L	90	158	575	495	●		●	
	370	KOBE	VCI370	90	158	575	585			●	9h25m
		GS YUASA	VGI370	90	158	575	540			●	

Roll-out Type Battery

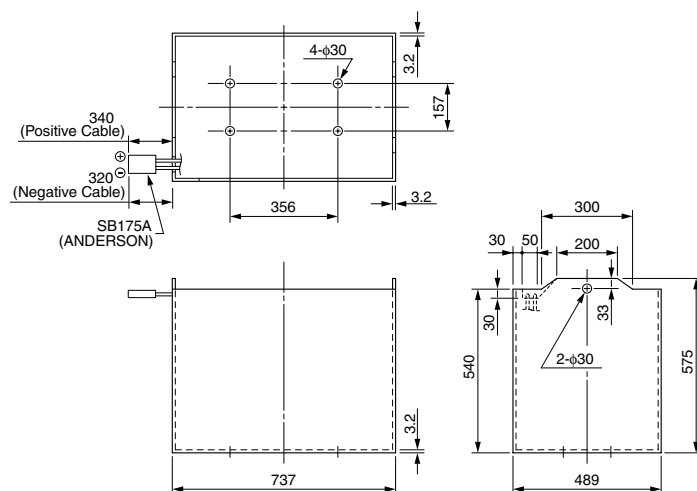
Battery Voltage V	Battery Capacity AH/5HR	Manufacturer	Battery Cell			Container Height mm	Weight (w/case) kg	Model			
			Type	Length mm	Width mm			CBT4	Operating Time	CBT6	Operating Time
48	216	GS YUASA	VCD4BN	94	157	500	365	●	12h16m	●	5h05m
	250	GS YUASA	VCD5AN	94	158	500	410	●	14h15m	●	6h06m
		KOBE	VCD250	90	158	500	435	●		●	
	305	GS YUASA	VZE305	90	157	500	500	●	17h26m	●	7h40m

Battery Connector Type

Battery	SB175A (ANDERSON)
---------	-------------------

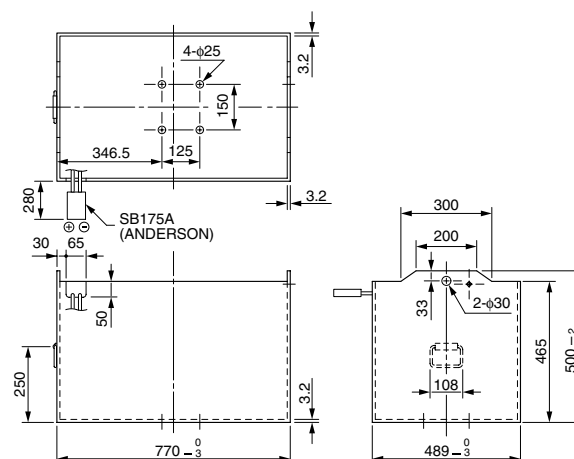
Dimensions of Battery Case

STD Type



Roll-out Type

Unit: mm



Dimensions of Battery Compartment

Model	CBT4.6	
Width	mm	745 (778)
Length	mm	497
Height	mm	594 (523)

NOTE: () for Roll-out Type Battery.



CBTY4

MAIN VEHICLE SPECIFICATIONS

Manufacturer			TOYOTA
Model			CBTY4
Power Type			Battery
Operator Position			Stand on
Tire Type	Front/Rear		Pneumatic
Wheels (x = driven)	Front/Rear		2/2x
Maximum Drawbar Pull	3-Minute Ratings	N <kg>	3920 <400>
Rated Drawbar Pull (Towing Capacity)	60-Minute Ratings	N <kg>	980 <100>
Towed Weight	60-Minute Ratings	kg	4000
Travel Speeds	No Load	km/h	13.5
	w/ Load	km/h	9 w/2 ton
Gradeability *	No Load 3-Minute Ratings	% (tanθ)	36
Overall Length	w/ Hitch	mm	1755
	w/o Hitch	mm	1615
Front Overhang		mm	235
Rear Overhang		mm	240
Overall Width		mm	965
Overall Height		mm	1185
Turning Radius (Outside)		mm	1600
Hitch Length		mm	140
Height of Hitch		mm	305
Wheelbase		mm	1140
Tread	Front	mm	260
	Rear	mm	790
Underclearance	Center of Wheelbase	mm	75
Floor Height		mm	200
Total Weight	w/ Battery	kg	975
	Without Battery	kg	625
Weight Distribution (With STD Battery)	Front	kg	290
	Rear	kg	685
	Number	Front/Rear	2/2
Tires	Size	Front	3.50-5-6PR (I)
		Rear	4.00-8-6PR (I)
Brake	Service (Foot)		Hydraulic
	Parking (Foot)		Mechanical
Battery	Voltage/Capacity (5-Hour Ratings)	STD	V/AH
	Weight (STD Capacity Type)	kg	350
Electric Motor	Drive	kW	2.6
Control Type	Drive		Transistor chopper

NOTE: * Computed values.

TOWED WEIGHT

Unit: Ton

Model		Start on Grade	
		3-Minute Rating	60-Minute Rating
Surface Condition (Dry Even Concrete)		CBTY4	CBTY4
Level Road		4.0 <7>	4.0 <7>
	1°	3.4 <4>	1.9 <7>
	2°	2.7 <4>	1.0 <7>
	3°	2.2 <4>	0.5 <7>
	4°	1.7 <4>	0.2 <7>

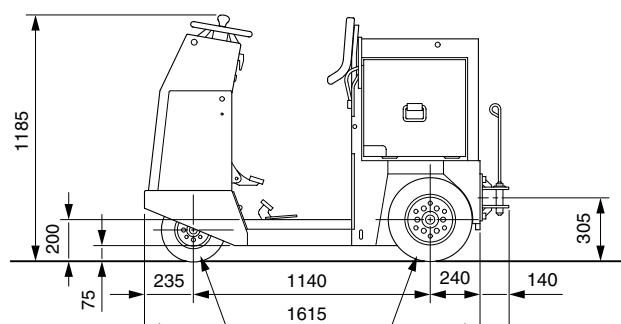
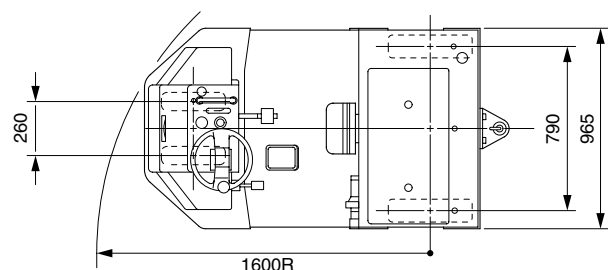
NOTE: < > indicates travel speed in km/h.

DIMENSIONAL DRAWINGS

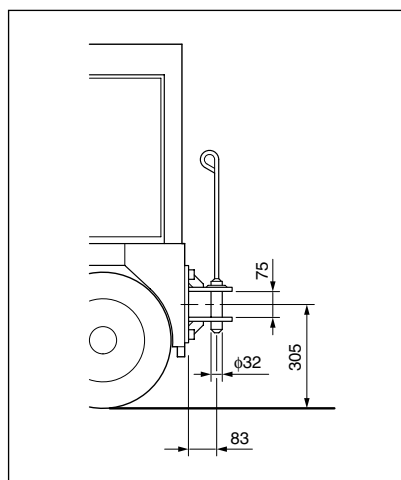
CBTY4

Unit: mm

CBTY4



DRAWBAR



INDEX: ○ Standard
● Available

STANDARD EQUIPMENT

CBTY4

- Operator Presence Sensing System (OPS)
- Headlights
- Battery capacity indicator
- Hour meter
- Electric horn
- Floor switch
- Buck-up buzzer wiring
- Non-slip sheet
- Rear drawbar
- Dual-action Parking brake
- Pneumatic tire

OPTIONS AVAILABILITY CHART

Model	CBTY 4
Item	
BATTERY AND CONTROLLER	
Battery	☆ ●
Battery Case	●
Battery Carrier	●
Spare Battery Carrier	●
Battery Charger (Off Truck Type)	☆ ●
Keyless Ignition Switch	●
LIGHT AND INDICATORS	
Rear Combination Lights	●
Forward & Back-up Chime	★ ●
Back-up Buzzer	★ ●
Turn Signal Lights	●
4-way Hazard Lights	●
Strobo Light Wiring	★ ●
Yellow Beacon	★ ●
BODY	
Rear-view Mirrors Oval Type (Right and Left Sides)	●
w/o Rear Drawbar	●
Floor Switch w. Work On Hour Meter	●
Pencil Holder	●
Document Box	●
Name Plate	1) ●
Unit Indication (mm/kg)	●
OPS Decal	●
WHEEL AND TIRE	
Pneumatic-Shaped Cushion Tire	☆☆ ●
OTHER	
Tool Set A	●

NOTE:

1) Available for English, Spanish, Chinese, German, French, Russian, Taiwanese, Dutch, Danish, Portuguese, Italian, Greek, Swedish, Norwegian, Finnish, Hungarian, Czech, Polish, and Turkish.

★ Please see the "Matching Options".

☆☆ Please see the chart below for the item.

TIRE AVAILABILITY

Model	Tire Arrangement	Pneumatic-Shaped Cushion Tire			
		Tire Size	Rim Size (Type)	Rib Pattern	Rib Pattern (White)
CBTY4	Front	3.50-5	3.00SP DT (Divided)	●	●
	Rear	4.00-8	3.00D DT (Divided)	●	●

AVAILABILITY OF BATTERY CHARGER

Full Automatic Charger

Battery Voltage	Battery Capacity	AC Input Voltage	Manufacturer	CBTY4
V	AH/5HR	V		
48	160-165	200	GS YUASA	●
	225-250	200		●

BATTERY AVAILABILITY

Model	Battery		
	V	AH/HR	
CBTY4	48	160/5	●
		165/5	●
		225/5	●
		250/5	●

MATCHING OPTIONS

(Column figures refer to matching with to the items listed at left)

Item	1)	2)	3)	4)	5)	6)	7)	8)	9)	10)
Front Rib Pneumatic-Shaped Cushion Tire	1)									
Rear Rib Pneumatic-Shaped Cushion Tire	2)									
Front White Rib Pneumatic-Shaped Cushion Tire	3)	×								
Rear White Rib Pneumatic-Shaped Cushion Tire	4)	×								
Spare Tire, Front	5)	×	×							
Spare Tire, Rear	6)	×		×						
Yellow Beacon	7)									
Strobo Light Wiring	8)							×		
Forward & Back-up Chime	9)									
Back-up Buzzer	10)								×	

INDEX: × Not available.

NOTE: For other matching please consult us.

STD Type

Battery Connector Type

September 2004