



Product Information

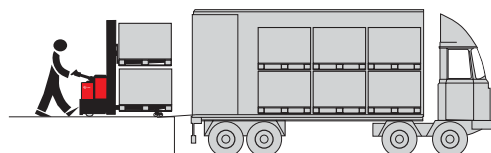
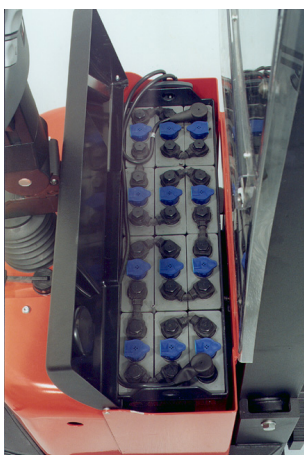
IXION

SWE160D

Powered Stacker for two pallet handling

The SWE160D is ideal for loading and unloading vehicles and in-vehicle handling allowing greater utilisation of transit space. A flexible and easily driven truck equipped with elevating support arms that allow use on gradients or uneven surfaces. With the fork in lowered position the support arm lift has a maximum capacity of 1600kg. By stacking the maximum capacity is 1200kg.

- Equipped with **separate elevating fork**. This means that two separate loads may be carried at the same time (800 + 800kg) in intensive operations.
- The **comfortable steering arm**, with its modern design, facilitates one hand operation — either left or right hand. The display on the handle gives useful information.
- The **BT POWERDRIVE system**. The unique integration of contactless controls, CAN-Bus communication and a separately excited driving motor gives many advantages. The contactless controls give smooth and effortless driving. The CAN-Bus communication provides quick, reliable transmission and only a few communication cables are needed. The separately excited driving motor allows easy programming of its performance — top speed, acceleration and automatic speed reduction — to suit the application.
- Standard configuration is **electric lift/lowering**. By using a lever the load can also be lowered **mechanical**. Very useful by heavy or fragile load.
- Choice of having **PIN Code** (up to 10) instead of key. Provides access control. Each code can store individual parameters to meet the driver's skill / environment.
- A **generous compartment** for storing various equipment / personal items.
- Excellent **servicing and fault-finding** with easy access to all components including drive wheel and castor wheels.
- Exceptional **battery power** with capacities available up to 320Ah, with two alternative battery compartments for continuous operation shift after shift.



Technical Details			SWE160D
Rated capacity	kg		1200
Rated capacity, support arm lift	kg		1600
Rated capacity, fork and support arm lift	kg		800 + 800
Load centre	mm		600
Weight without battery	kg		655
Max. axle load drive wheel, without/with rated load/ 1600 kg on support arms	kg		345/345/345
Max. axle load support arm wheels, without/with rated load/ 1600kg on support arms	kg		220/1195/1515
Max. axle load castor wheels, without/with rated load/ 1600kg on support arms	kg		328/553/633
Castor wheels, Vulkollan	mm		Ø 125x50
Drive wheel, rubber	mm		Ø 215x70
Support arm wheels, bogie or single, Vulkollan	mm		Ø 80x75
Travel speed, without/with 750kg/with rated load	km/h		6,0/6,0/5,0
Lift speed, without/with 800kg/1200kg	m/s		0,19/0,13/0,11
Lowering speed, electric, without/with rated load	m/s		0,15/0,19
Lowering speed, mechanical, without/with rated load	m/s		0,15/0,19
Gradient, without/with rated load	%		12/10 ¹⁾
Drive motor/Intermittent rating	kW/%		1,2/60
Lift motor/Intermittent rating	kW/%		2,2/5,0
Battery (5h discharge), min./max.	Ah		240/320
Battery weight, min./max.	kg		150/250
Service-/parking brake			electromagnetic
Steering system			steering arm
Speed control			BT Powerdrive
Steering arc	°		208

Dimensions, mm			SWE160D
x	Back of fork to wheel centre		956 ²⁾
y	Wheel base		1602 ²⁾
h ₅	Support arm lift height		200
h ₇	Platform height		150
h ₁₄	Height of handle in neutral pos.		1365
h ₁₃	Height of fork, support arms lowered/raised		90/210
l ₂	Truck length incl. fork face, without/with platform up/down		813/905/1279
b ₁	Chassis, width		770
s	Fork thickness		60
e	Fork width		182
l	Fork length		1150/1000
b ₅	Width across fork		570
m ₁	Floor clearance, min./max.		17/137
A _{st}	Aisle width, min		2230 ³⁾⁴⁾
W _a	Turning radius, without/with platform up/down		1786/1878/2252 ³⁾

Mast, mm		Duplex Tele		
h₂₃	Total lift height ⁵⁾	1700	1900 ⁶⁾	2100 ⁶⁾
h ₁	Height of mast, min.	1330	1430	1530
h ₂	Free lift	160	160	160
h ₄	Height of mast, max.	2110	2310	2510

1) Due to motor characteristics. Please ask technical support regarding driving on ramps and gradients

2) -64 mm with raised support arms

3) Based on medium size battery compartment. Large battery compartment = +52mm.

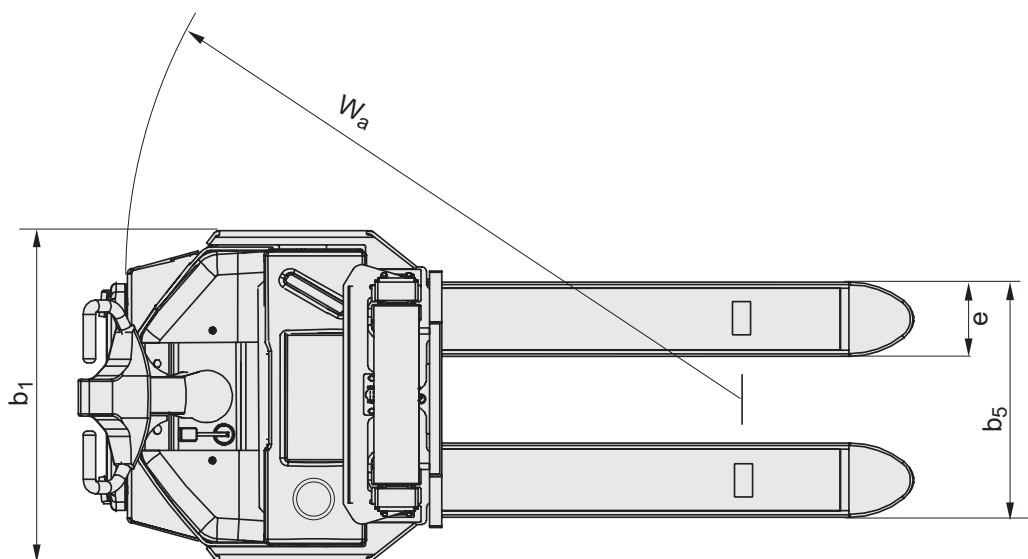
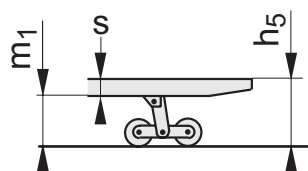
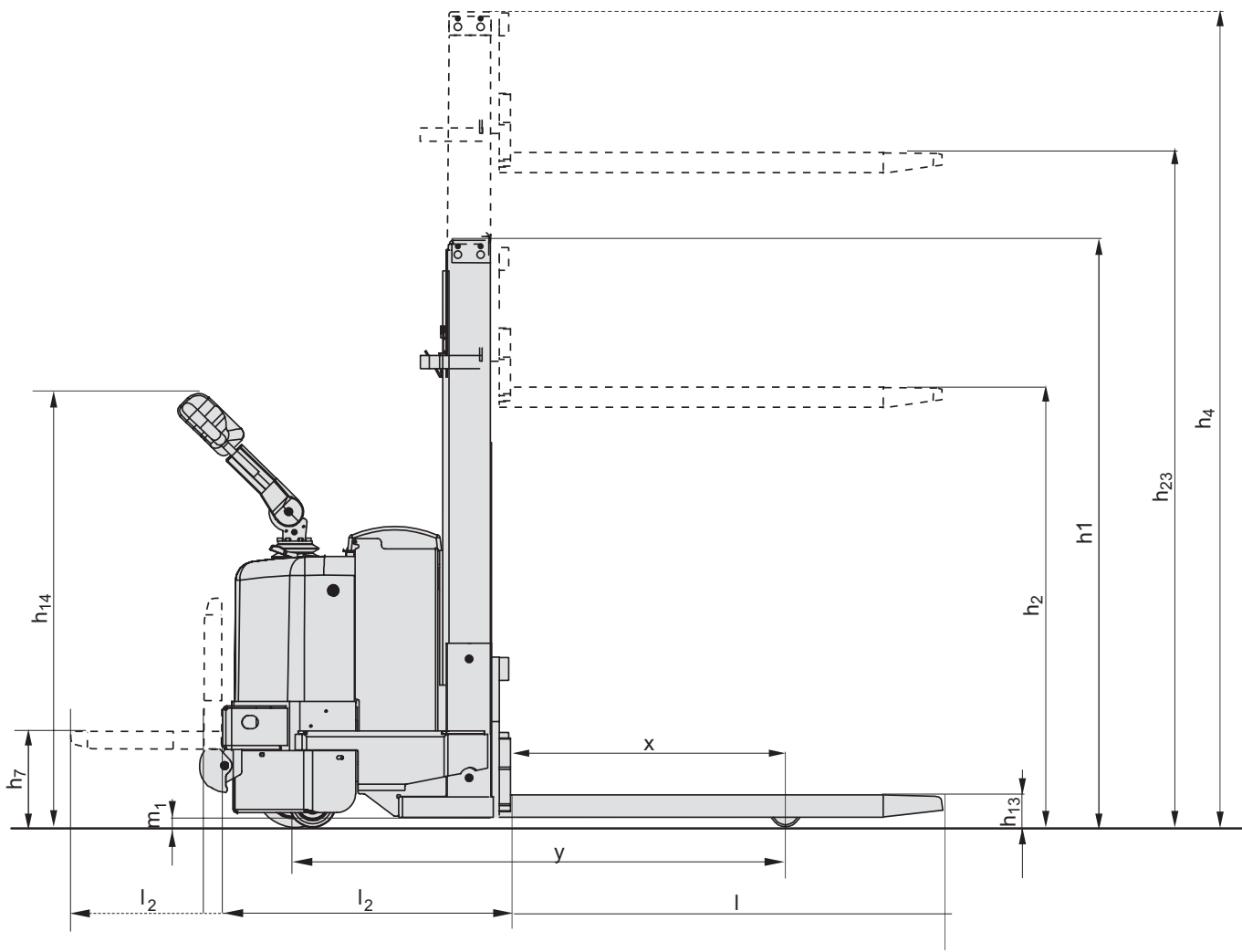
4) Platform up/down = + 92mm resp. 466mm

5) +120 mm with raised support arms

6) Min. battery weight = 200kg

Performance may vary due to motor and system efficiency tolerance and represents nominal values obtained under typical operating conditions.
BT Products AB products and specifications are subject to change without notice.
All data is based on VDI 2198.

Data is based on l = 1150mm, h₂₃ = 1700mm, without platform





Options

- **Load support**

To provide additional safety for load and operator.

- **Built-in charger**

The additional feature of a built-in charger placed in front of the electrical panel. Does not reduce the battery capacity.

- **Turtle button**

Comfortable placed on the steering arm. An on/off function for slower speed. Programmable from 40% up to 100%.

- **Integrated spring loaded and foldable platform**

The platform is spring loaded to reduce vibrations on uneven surfaces. The platform also improves driver safety.



The product complies with the EC-directives



BT Industries

Developed and produced by
BT Products AB



SS-EN ISO 9001, No. 003
ISO 14001, No. M005

BT Industries AB
SE-595 81 MJÖLBY
Tel: +46 - (0)142/860 00
Fax: +46 - (0)142/860 80