



## CX-T Technical Data

### Electric Tow Tractor

---

CX-T

---



first in intralogistics



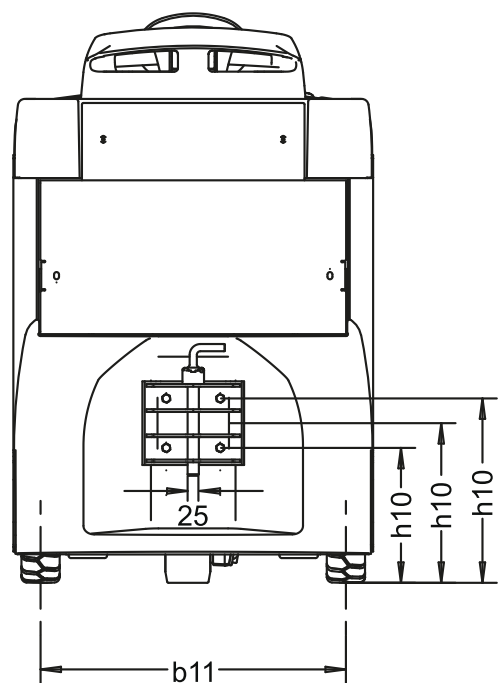
# CX-T Electric Tow Tractor

## Technical Data

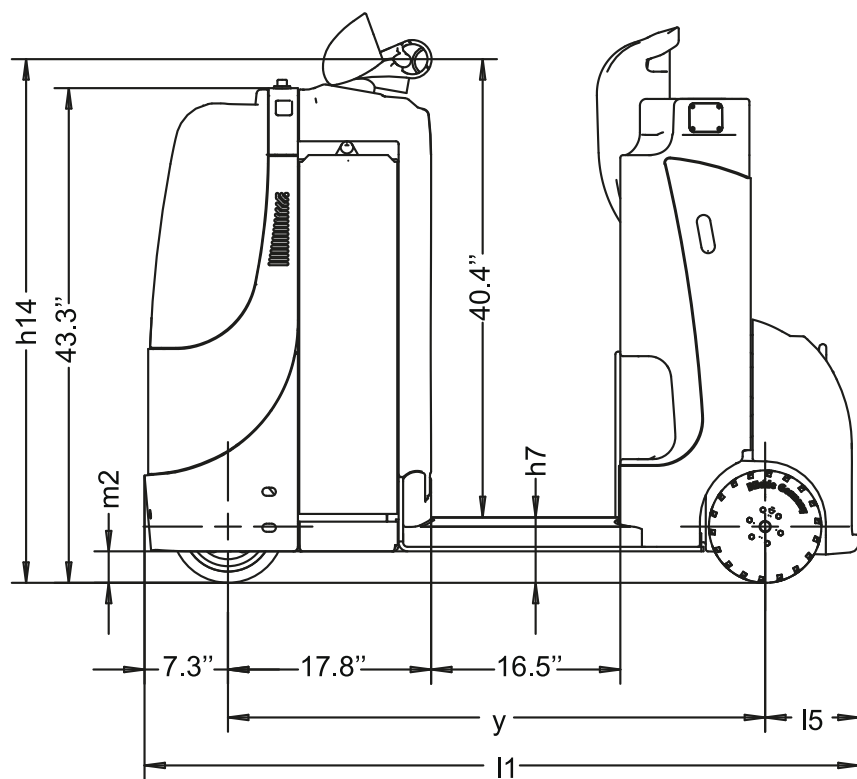


Distinguishing marks	1.1	Manufacturer				STILL	
	1.2	Manufacturer's type designation				CX-T	
	1.3	Drive				electric	
	1.4	Operator type				stand-on	
	1.5.1	Trailing load	Q	lb	kg	8800	4000
Weights	1.9	Wheel base	y	in	mm	47.0	1195
	2.1	Service weight		lb	kg	2579	1170
	2.3	Axle loading	with/without load	lb	kg	1289/1289	585/585
Tires/chassis	3.1	Tires	front/rear			cushion/super elastic	
	3.2	Tire size	front	in	mm	9.8 x 3.9	Ø 250 x 100
	3.3	Tire size	rear	in	mm	9.8 x 3.1	Ø 250 x 80
	3.5	Wheels, number (x = driven)	front/rear			1 x /2	
	3.7	Track width	rear	b <sub>11</sub>	in	mm	26.7 679
Dimensions	4.8	Platform height		h <sub>7</sub>	in	mm	5.7 146
	4.9	Height of steering in driving position		h <sub>14</sub>	in	mm	45.8 1165
	4.12	Coupling height		h <sub>10</sub>	in	mm	7.5/9.6/11.8/14/16.1 190/245/300/355/410
	4.17	Coupling length		l <sub>5</sub>	in	mm	5.0 128
	4.19	Overall length		l <sub>1</sub>	in	mm	61.9 1573
	4.21	Overall width		b <sub>1</sub> /b <sub>2</sub>	in	mm	31.5 800
	4.32	Ground clearance, center of wheel base		m <sub>2</sub>	in	mm	2.8 70
Performance data	4.35	Turning radius		W <sub>a</sub>	in	mm	54.7 1390
	5.1	Travel speed	with/without load		mph	km/h	4.6/8.0 7.5/13.0
	5.5	Drawbar pull	with load		lb	N	360 1600
	5.6	Max. drawbar pull	with load		lb	N	900 4000
	5.7	Gradeability	with/without load		%		contact factory
El. engine	5.10	Service brake					electromagnetic
	6.1	Drive motor rating 60 min			kW		3.0
	6.4	Battery voltage			V/Ah		24/450
Misc.	6.5	Battery weight		lb	kg	903.9	410
	8.1	Type of drive unit					AC
	8.4	Noise level at the driver's seat			dB (A)		64.0

CX-T Electric Tow Tractor  
 Technical Drawings

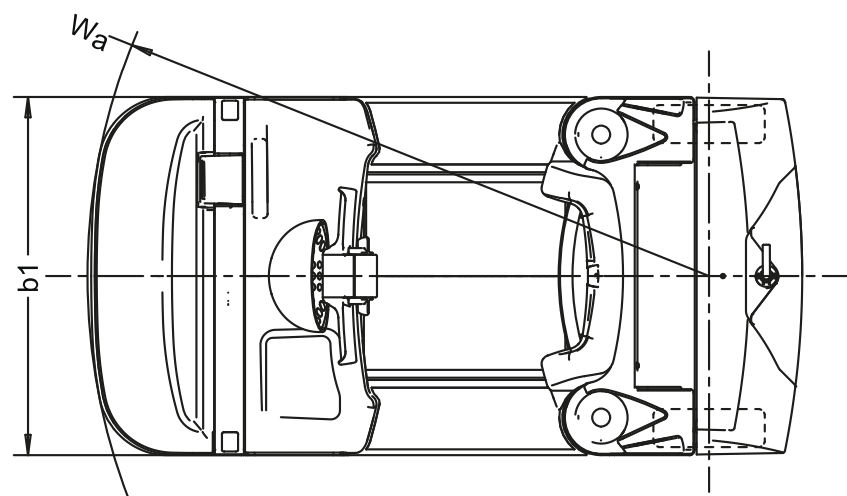


Rear view CX-T



Side view CX-T

Mini Chart		
	in	mm
b1	31.5	800
b11	26.7	679
h7	5.7	146
h10	11.8/14/16.1	300/355/410
h14	45.8	1165
l1	61.9	1573
l5	5.1	128
m2	2.8	70
y	47.0	1195
wa	54.7	1390



Top view CX-T

## CX-T Electric Tow Tractor

### Detailed Photos



Operator's compartment



Travel control/display



Return to neutral steering handle



CSE tires/load end



Backrest



Metal front bumper (optional)

\*Some features shown may be optional.



## CX-T Electric Tow Tractor



\*Some features shown may be optional.

CX-T Electric Tow Tractor

CX-T



Stand-on tow tractor for frequent mounting and dismounting

Efficient and reliable support of production and assembly lines when used as tow tractor

Would you like to transport loads over longer distances on one or more trailers in an efficient, healthy and safe way? If the answer is yes, you will love the CX-T! This electric tractor can pull up to 8,800 lbs to the desired destination in no time. When used as a tow tractor, it can be relied upon to supply production and assembly lines. The super elastic rear tires roll

smoothly and safely even across uneven floor surfaces. Plus, thanks to the low entry height, work can be carried out quickly and conveniently, even when repeatedly mounting and dismounting, e.g. when hooking and unhooking trailers. Of course, the driver also gets the comfortable backrest, selectable driving programs and optional writing desk.

Simply Efficient Factors

Power

- High power, 3 kW drive system
- Maintenance free, AC technology
- Superbly protected, fully enclosed motor

Precision

- Intuitive, efficient operation
- Precise manoeuvring: sensitive steering
- Return to neutral steering handle

Ergonomics

- Low fatigue operation
- Cushioned backrest, including grip opening
- Vibration absorbing “floating” operator platform

Compactness

- Suitable for extremely tight operating conditions
- Integrated hitch mounting area
- Short wheelbase

Safety

- Operator present area “dead man switch”
- “No edge” rounded chassis contours
- Cornering control, automatic speed reduction

Environmental Responsibility

- Regenerative braking system
- 95% recyclable materials
- Energy saving programing and speed reduction



## Standard

### Operator compartment

Operator compartment with fixed backrest

### Battery system

Battery compartment for standard (345 – 465 Ah) batteries

Battery compartment cover made from metal for standard (345 – 465 Ah) batteries

### Additional equipment

Hours meter active when driving and lifting

## Optional

### Driver's cab

Operator compartment with height-adjustable lumbar support

Accessories bracket on the drive side – low

Accessories bracket on the drive side – high

Accessories bracket on the drive side – high with cross bar

Accessories bracket on the load side – low

Accessories bracket on the load side – high

Accessories bracket on the load side – high with cross bar

Clipboard

Pedestrian operation using push buttons on the side of the backrest

### Safety and performance

Warning light with flashlight

Lighting system with reverse and brake lights

Panoramic rear-view mirror on the left and right

Profiled drive wheel

### Battery system

Battery compartment for 520 – 620 Ah batteries

Battery compartment cover made from metal for 520 – 620 Ah batteries

### Additional equipment

Adjustable working lights in all directions

Storage boxes at the rear

Steel protective skirting with solid rubber cover

Steel protective skirting

Hours meter with permanent display when driving and lifting



KION North America Corporation  
2450 West 5th North Street  
Summerville, SC 29483  
Main Tel.: 843.875.8000  
Truck Sales Fax: 843.875.8471  
liftrunnernorthamerica@kiongroup.com

**For further information please visit:**  
**[www.kion-na.com](http://www.kion-na.com)**



Standard truck meets all applicable mandatory requirements of ANSI/ITSDF B56.1 standards for powered industrial trucks. NOTE: Performance data may vary due to motor and system efficiency tolerances. The performance depicted represents nominal values obtained under typical operating conditions. Metric dimensions are in millimeters unless otherwise specified. All metric dimensions are not direct equivalents due to rounding data. The descriptions and specifications included on this data sheet were in effect at the time of printing. Linde Material Handling North America Corporation reserves the right to make improvements and changes in specification or design without notice and without incurring obligation. Please check with your authorized Linde dealer for information on possible updates or revisions.